



Annual Report

Fiscal Year Ending 3/31/2012

Vision

Our Vision is to be recognized as the exemplary Human Services Agency for effectively serving Irving residents in need.

Mission

Our Mission - Irving Cares, in partnership with the Irving community, is dedicated to identifying and providing its residents with temporary assistance and training to promote self-sufficiency.

Values

Our Values – Irving Cares will:

- Provide clients with services in a respectful and dignified manner without regard to race, color, sex, age, handicap, religion or national origin
- Identify and address the needs of the Irving community
- Partner with clients to develop mutual solutions that lead to self-sufficiency
- Work with volunteers, agencies, and organizations for greater impact and effectiveness
- Assure donors and supporters of superior management and fiduciary practices
- Implement a sound fund development plan in support of commitments to the community

Founded by a group of concerned citizens in 1957, Irving Cares is committed to providing essential services for Irving’s neediest families. We strive to meet those needs with caring volunteers and staff that guide clients through a crisis. We offer proven programs that are efficient, effective and measured for productivity.

Providing a Food Pantry, Financial Assistance for rent/mortgage or utilities, Employment Services, Patient Transportation Program, and Information and Referral, Irving Cares offers a web of holistic services to Irving families.

Board Officers

Yolanda Carroll, BNSF Railway
Chair

Monica Reyes, Fluor Corporation
Vice Chair

Mary Ann Burns, BB&T
Secretary

Chandra Hill, Greater Irving—Las Colinas Chamber of Commerce
Treasurer

Board Members

Carol Bell
Community Volunteer

Allan Meagher
UPS

Marvin Bond
Greater Irving—Las Colinas Chamber of Commerce

Tom Morton
Independent Bank of Texas

Angela Brooks
Citi

Eunice Nakamura
Vincent, Lopez, Serafino & Jenevin PC

Chris Carathers
Irving North Christian Church

Candi Richardson
Insperity

Mechelle Davidson
TXU Energy

Statement of Activity

REVENUE

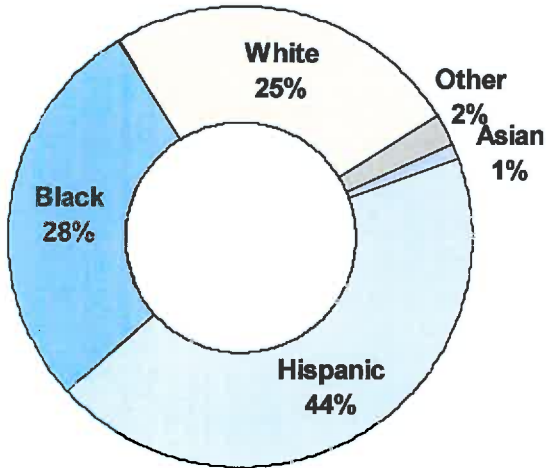
Corporate	\$314,419
Individual	\$303,189
Donated Food	\$266,413
Foundation	\$210,050
United Way	\$127,611
Government	\$45,882
Faith Community	\$40,278
Interest	\$1,621
	\$1,309,462

EXPENSES

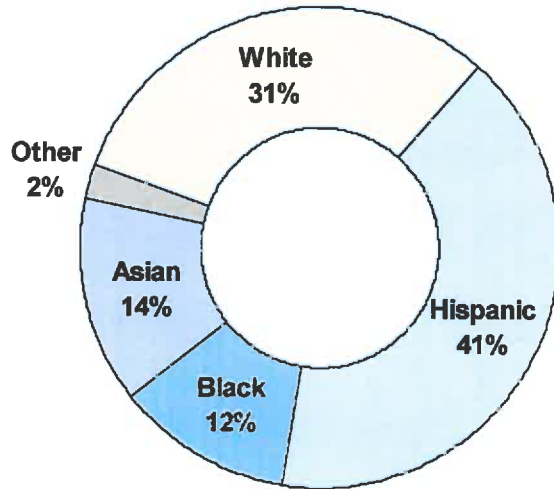
Program Services	\$1,119,896
Management & General	\$111,984
Fundraising	\$136,883
	\$1,368,763

NET CHANGE **\$ (59,301)**

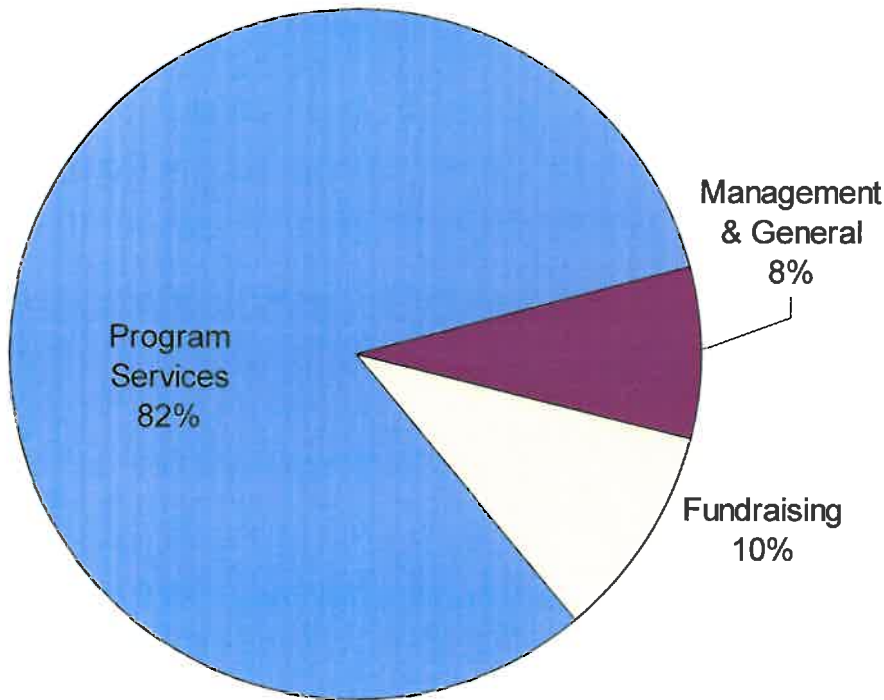
Client Demographics



City of Irving Demographics 2010 Census



EXPENSES



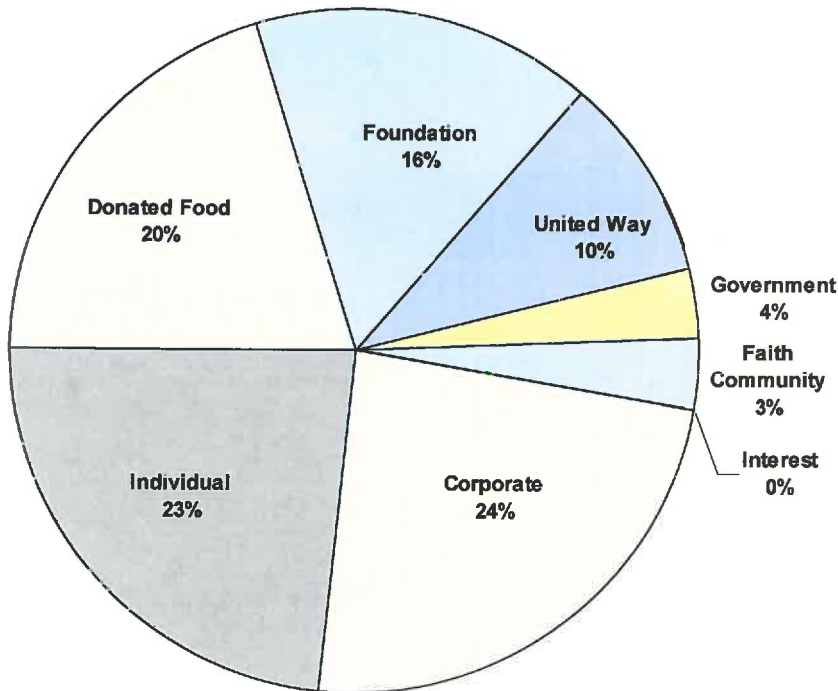
Irving Cares is committed to remaining a sound investment for Irving.

Eighty-two cents of every dollar is returned to the community as program-related expenses.

We administer fiscally responsible programs that meet our clients' needs.

We work together with other charities, city departments, churches, hospitals, individuals and civic groups to form relationships that accurately assess and respond to the needs of our community.

REVENUE



Judie Stang
CEO

By the Numbers

305,517

dollars worth of donations and man
hours contributed by Irving Cares
volunteers

216,290

total population of Irving

42,372

total Irving neighbors served

8,366

families given nutritious groceries

5,124

job referrals provided

1,116

families received financial
assistance

631

clients completed the
money management course

82

percentage of Irving Cares total
expenses related to client programs

And the Results

100%

of clients in the Patient Transportation
Program agreed they could not get to
medical appointments or have easy
access to prescriptions without the
program

98%

of volunteers said that volunteering at
Irving Cares helped them stay
involved and stay active,
both mentally and physically

97%

of clients who received utility
assistance were not disconnected
within 90 days of receiving assistance

94%

of clients said the Food Pantry helped
prevent hunger in their household

94%

of clients who received rental
assistance were not evicted within
90 days of assistance

90%

of clients who obtained employment
remained employed 90 days of longer

Located in the City of Irving Human Services Building
440 South Nursery Road, Suite 101
Irving, Texas 75060