



## The Great Harvest ~ An Evening to Care

### TGH Sponsors

as of July 22, 2014

### Plentiful Providers

Mass. Electric Construction Co.  
& Kiewit

### Maize

Julie & Mike Esstman  
Kimberley & Scott Sheffield  
Cydney Roberts & Kyle Taylor  
TXU Energy

### Golden Pumpkins

Jane & Charles Beach  
Angela & Michael Brooks  
Fran & James Cassels  
Rita & Tom Chasser  
Exxon Mobil Corporation

### Cornucopias

Sandra & Kyle Ahlfinger  
Diann & Joseph Contestabile  
Karen & Chuck Cooperstein  
Bob Hagestad  
Chris & Bob Horner  
Insperity  
Kroger Food Stores  
Diane & Jesse Orsini  
Barbara & Brock Scott  
Teddie & Ken Story

### Harvest Baskets

Julia Black  
Billy Ray Clements  
Jacqueline & Richard Gamble  
Jensy & Mike Gregory  
Kathy & Clint Howard  
Kimberly Humphries  
Irving Convention  
& Visitors Bureau  
Irving Hispanic  
Chamber of Commerce  
Betty & Dan Killingsworth  
William Lucia & Joseph Covelli  
Sammy L. Maddox  
Plastronics  
Karen & Brad Raitz  
Charles A. Boyce

### THE GREAT HARVEST



Springs that was in the live auction last year. Can't you see yourself there? Also in the live auction mix are a Lone Star Park suite complete with food and beverages for 20 friends, a Crawfish Boil for 50, lovely jewelry, and a six-night stay in a beautiful two-bedroom condo in Port Aransas!

**Gather your friends for one of the best fundraising events in town.** As details are confirmed, we will update <http://www.irvingcares.org/how-to-help/the-great-harvest> with news about auction items, the menu, raffle prizes and more.

Event Chairperson Cydney Roberts says, "The Great Harvest is the signature event used to raise general operating funds for Irving Cares. This year's goal is \$300,000, and we cannot do it without your help. Please join me in supporting Irving Cares."

Interested in being a sponsor or donating an item to the auction? Contact Teddie Story at [tstory@irvingcares.org](mailto:tstory@irvingcares.org) or 972-721-9181 x203. ♥

### Have you marked your calendar for September 26?

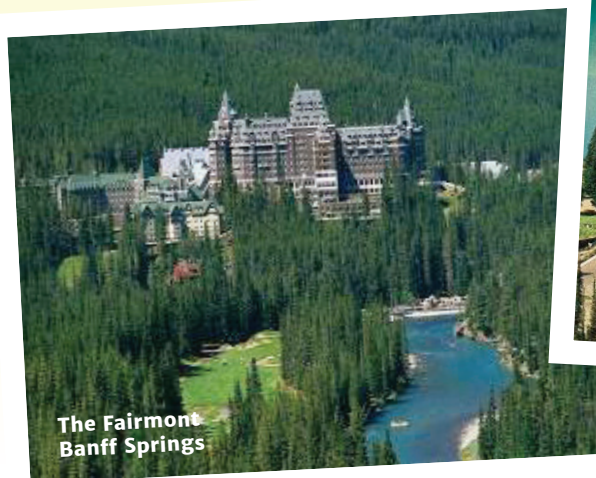
**T**hat's this year's date for the annual fundraiser for Irving Cares. We are returning to the lovely ballroom at **Four Seasons Resort – Dallas at Las Colinas** for a casual evening of great fun and fundraising.

There will be hearty, bountiful food designed specifically for The Great Harvest, and the auctions will not disappoint. The photos below are from a trip to Banff

September

26

Four Seasons  
Resort & Club



The Fairmont  
Banff Springs



The Fairmont  
Chateau Lake Louise

### Keep up with Irving Cares online!

Download a QR scanning app and scan these codes on your mobile device.



facebook.com/  
IrvingCares



Twitter@  
IrvingCares



[irvingcares.org](http://irvingcares.org)

THIS ISSUE

- New Board Members
- August 22 La Cima Club Charity Classic
- National Association of Letter Carriers Food Drive
- Staff Spotlight
- ... and much more!

## BOARD OF DIRECTORS

**Angela Brooks**, *Chair*  
Citi

**Lori Bunger**, *Vice Chair*  
HOLT CAT

**Rev. Diane Baldwin**, *Treasurer*  
Woodhaven Presbyterian Church

**Mechelle Davidson**, *Secretary*  
TXU Energy

**Vanessa Aranda**  
BB&T

**Allison Bennett**  
DeVry University

**Marvin Bond**  
Greater Irving-Las Colinas  
Chamber of Commerce

**Yolanda Carroll**  
BNSF Railway

**Lisa Castillo**  
Allstate Insurance Company

**Sharmon Chilton**  
BCI Technologies

**Karen Cooperstein**  
Cooksey Communications, Inc.

**Ashley Gordon**  
Department of Family &  
Protective Services

**Chandra Hill**  
Carrington College

**Ronda Huffstetler**  
Ronda of the Plaza Salons

**Mike Overby**  
Express Personnel Services

**Pujan Patel**  
Community Volunteer

**Karen Raitz**  
Omni Hotels & Resorts

**Don Sears**  
Community Volunteer

**Haim Vasquez**  
Law Office of Jaime Barron, PC

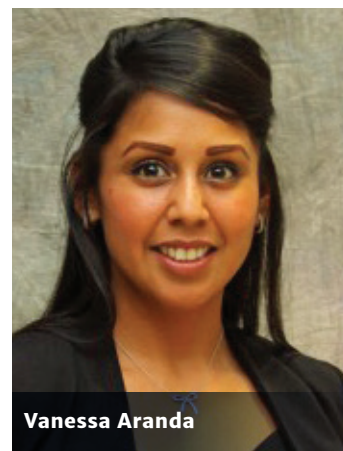
**Teddie Story**  
Chief Executive Officer



## New Board Members Join Irving Cares

Through our continuous search for board members, we have recently asked two current volunteers to add "Board Member" to their responsibilities. Vanessa Aranda and Don Sears officially joined the board in the April 2014 Board Member Annual Planning Retreat.

**Vanessa has been a volunteer in the Case Management Department** as an instructor for the Money Management classes we offer monthly for those clients receiving financial assistance. Vanessa's background as an Assistant Vice President for BB&T is perfect for helping our clients learn how to better manage their budgets, track expenses and save for the future.



Vanessa Aranda



Don Sears

**Don has been a volunteer in the Food Pantry as a driver**, picking up food donations and purchased food from our vendors. As a retired Irving Fire Department member, he knows the quickest route to any destination.

As board members, they are tasked with fiscal oversight, fundraising and ensuring the agency has the resources needed to meet our client needs. We are happy to welcome these advocates who will help spread the word about Irving Cares, telling others about the work we do and how people can help the agency. ♥

If you are interested in board service, contact Teddie Story at [tstory@irvingcares.org](mailto:tstory@irvingcares.org) or 972-721-9181 x203 for more details.

## Irving Cares Year Ending 2014 Annual Outcomes

*All of Irving Cares programs are measured for efficiency.*  
*See the results of our surveys throughout this issue of FOCUS.*

**99%** of food pantry clients said they were treated with dignity and respect by the staff and volunteers.

Irving Cares, a 501(c)3 nonprofit corporation, publishes Focus to update the community about our programs, activities and plans. Please contact us if you have a story or information of interest.

Irving Cares, Inc.  
440 South Nursery Rd, Suite 101  
P.O. Box 177425  
Irving, TX 75060  
972-721-9181 Phone  
972-438-7345 Fax  
[www.irvingcares.org](http://www.irvingcares.org)

Authors and Photography:  
Friends of Irving Cares  
Editor: Karlene Swaynie  
Layout: FigDesign  
© 2014 Irving Cares.



# Shine up your cowboy boots and head over to La Cima Club

for their 8th Annual Charity Classic — benefiting Irving Cares as the local charity.

This premier event will offer fantastic Texas food, wine, spirits and fun with a live band in the swanky space of La Cima Club, high above the Mustangs at Williams Square.

*It's a night you don't want to miss!*

Live music featuring  
**DEREK ANTHONY AND THE D-TRAIN BAND**

*Deep in the Heart of*  
**TEXAS**

**La Cima Club's  
8th Annual Charity Classic**

*Join us for the best food, drinks,  
fun and flair that Texas has to offer!*

**August 22nd 6pm-10pm**

**\$45++**

Register at [www.LaCimaClub.com](http://www.LaCimaClub.com)

Silent & live auctions benefiting  
**Irving Cares  
Augie's Quest  
ClubCorp's Employee Partners Care Foundation**

Logos: Irving Cares, AUGIE'S QUEST, La Cima Club, CHARITY CLASSIC, E.P.C.F.

[www.LaCimaClub.com](http://www.LaCimaClub.com) 972-869-2266

Register at <https://classic.als.net/Register?id=1134>

**94%** said the food pantry helped prevent hunger in their household.

**70%** were hungry in the last 12 months but didn't eat because there wasn't enough money for food.

**463** volunteers recorded 18,723 hours of volunteer service in this fiscal year.

**96%** of the 663 clients who attended a Money Management class were able to identify three pieces of budgeting information.

**95%** of housing assistance clients were able to stay in their homes for at least 90 days after receiving assistance.

**131** clients enrolled in the Patient Transportation Program received 1,488 door-to-door rides to medical appointments.

# Recurring Gifts are Simple

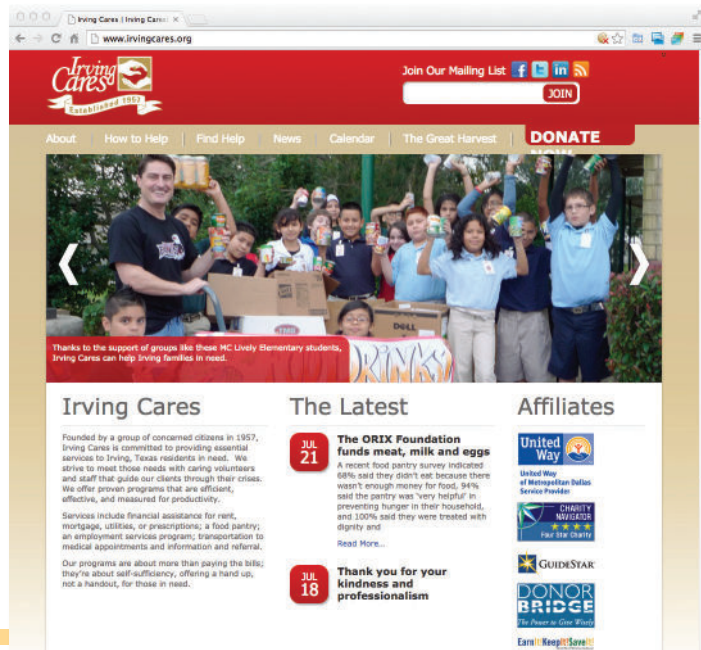
**Would you consider making recurring online donations to Irving Cares?** You choose the amount and frequency, and Irving Cares does the rest.

One donor says,

***"I love being able to 'budget' my donation by charging it to my credit card. That way, I can support several charities and just write one check monthly. Blessings to all of you."***

This donor is a blessing to Irving Cares, as we have a regularly-scheduled revenue source because he uses recurring gifts.

Visit [www.irvingcares.org](http://www.irvingcares.org) and click on the **Donate Now** button to see for yourself. ♥



## Corporate Groups at Irving Cares

### ***Days of Service has become a phrase we love to hear.***

This phrase signals that another corporate group is headed to Irving Cares with their volunteers spending a few hours to tour the agency, learn about the programs we offer clients, spend the day as regular volunteers in the food pantry preparing orders for clients, while others work in the food warehouse sorting, stocking and readying food to be distributed to one of the 822 families that we see a month. They get a true understanding of the type of work we do, what they can do in the future to help and also get a good look at who we serve.

**We have had *Days of Service* with HMS, BB&T, Irving Convention Center, Aon Affinity, Liberty Mutual, Commercial Metals Corp, Bank of America, Wells Fargo, CHRISTUS Health, Allstate, Berkley Specialty, and Celanese.**

Many of these companies take our message "*It's a hand up, not a handout*" back with them to spread through their offices and to their coworkers. Many have vowed to maintain and strengthen their corporate relationship with Irving Cares.

We welcome your corporate group to experience *Days of Service*. Contact Kyle Taylor at [ktaylor@irvingcares.org](mailto:ktaylor@irvingcares.org) or 972-721-9181 x209 for more information. ♥

## Making Ends Meet

It costs nearly \$32,000 a week for Irving Cares to maintain the current level of services demanded by community needs. We would like to thank the following partners for stepping up and helping during our first quarter of the new fiscal year.

### **FOUNDATION FRIENDS**

Belmont Foundation  
Communities Foundation of Texas  
Carl B. & Florence E. King Foundation  
Stemmons Foundation  
W.P. & Bulah Luse Foundation  
Anne F. Lyster Charitable Foundation  
ExxonMobil Foundation  
Martha S. Graham Trust  
Liberty Mutual Group  
Tom Trotter Foundation

### **FAITH PARTNERS**

Christ Church  
First United Methodist Church  
Valley Ranch Baptist Church  
First Christian Church  
Woodhaven Presbyterian Church  
Episcopal Church of the Redeemer  
First Church of Christ, Scientist  
Holy Trinity Church  
DFW Hindu Temple  
Homebuilders Sunday School Class  
New Beginnings Fellowship  
Islamic Center of Irving

### **BUSINESS AND COMMUNITY PARTNERS**

Matching Gifts Programs  
SEI Incentives  
Allstate Insurance Company  
Jim Adler & Associates, Texas Injury Lawyers  
International Association of Administrative Professionals  
North Lake Senior Stretch  
Las Colinas Medical Center  
Jacqueline's Interiors  
E-Waste Collections  
Custom Embroidery  
TXACOM  
ORIX foundation  
Canadian-American Chamber of Commerce  
Off Duty Enterprises  
Verizon Directories  
Buttons & Bows

***115 individuals also donated to help needy neighbors in the first quarter. Thank you!***



## Two Agencies Help Rachel to Gain Self-Sufficiency

Rachel first came to Irving Cares last December to attend Job Search Seminar. She found employment at a fast food chain but continued looking for a higher paying position.

Her home situation was unfavorable with her children's father, so the case manager encouraged her to contact Family Promise for a temporary housing solution, for which she qualified. Feeling better about herself, she continued her job search with renewed vigor. The case manager

referred her to Telvista where she was eventually hired. Rachel has been at Telvista for three months and just received a raise, as well as a \$200 bonus for referring another young lady who was hired as well.

Rachel returned to Irving Cares Job Search Seminar to share with the class how much she loves her job, giving words of encouragement. She told the class she has been able to get into her own apartment and is well on her way to self-sufficiency. ♥

**100%** of clients who received utility assistance were able to keep their utilities connected for at least 90 days.

**99%** of volunteers said that volunteering at Irving Cares helped them stay involved and stay active, both mentally and physically.

Dear Irving Cares, July 6, 2014

I came to Irving Cares on June 21, and want to thank your staff for your kindness and professionalism. It was my last day of food at home and I have been able to enjoy lots of tuna fish, canned vegetables, chicken breasts, and eggs every day. Very healthy food that IRVING Cares gave to me! They even bagged it in knapsacks so I could carry it to bus stop.

One day after I get back on my feet, I will donate to IRVING Cares.

Thank You again and may God Bless IRVING Cares staff,

### FOOD PANTRY NEEDS

Summertime is upon us! The kids are out of school. Many families are planning vacations and getting the summer "honey do's" done. One thing constant is that hunger does not take a summer vacation.

The food pantry at Irving Cares could use your help by hosting a summer food drive. **We need canned meals like soup, chili, stew, and Chef Boyardee items; canned meats like tuna, chicken, spam, potted meats; toilet paper, breakfast cereals, hygiene items and diapers.** Food drive support through your workplace, civic club, social club, or place of worship is greatly appreciated. ♥

### VOLUNTEERS NEEDED

Do you like helping people? Do you like working in a fun environment, with lots of nice and neat people? Do you enjoy administration, talking one-on-one to people in need, or like to go grocery shopping?

We have a spot for you. We are looking for a few good ladies and gentlemen to help our neighbors one or two four-hour days a week, morning or afternoon. We do not require weekend work.

**The pay: you get to help over 1,200 families a month! ♥**

### PRESCRIPTION ASSISTANCE

With the rising costs of prescription drugs, Irving Cares has seen an increase in clients needing help to recover from an illness. These are non-narcotic, non-maintenance drugs such as the antibiotic a young mother needs for her son with an earache. Imagine her anxiety of not being able to afford medication for her child, as well as the relief of getting help in covering the expense. In February, we provided assistance for nine clients with a total of \$553, leaving them with a mere \$46 in total co-pays. **Even a small gift to the prescription assistance program can change a person's life.** Give today. ♥

**To help out your neighbors, please contact Kyle Taylor, Coordinator of Volunteers, at 972-721-9181 x209 or [ktaylor@irvingcares.org](mailto:ktaylor@irvingcares.org)**

# National Association of Letter Carriers Food Drive

**Irving Cares extends a huge “THANK YOU” to the community and the National Association of Letter Carriers.** The local and postal community once again rose to the cause of fighting hunger in the City of Irving.

Held on May 10, the annual NALC food drive was a great success — 3,873 pounds of canned goods and other non-perishable food items were donated to the food pantry at Irving Cares. The city of Irving was also one of four cities chosen to receive a cash gift of \$500 from the NALC. Irving Cares is very proud to be chosen again as one of the recipients of food from this event.

Irving Cares is also grateful to the volunteers who helped with this

event. We are very thankful for Coach Aaron De La Torre and Coach Todd Allen for wrangling the Irving High School football team to help us load and unload the donated canned goods from the postal workers. These young men did an outstanding job representing themselves, their school and their city with time, energy and attitude as they stepped in and helped out.

Move for Hunger, an organization of moving companies who volunteer their moving trucks and time helped us transport the donated goods from the postal office to Irving Cares.

This event was supported by Irving Cares volunteers Helen and Don Rice



and Peggy and Roger Smith who helped weigh and sort donated items.

This annual event is one that helps Irving Cares replenish the food pantry inventory. With the arrival of the summer months, we need all the donations we can get.

As a United Way human services agency assisting Irving residents who are experiencing a temporary crisis situation, Irving Cares greatly appreciates the continued support of Irving's residents. The Food Pantry serves an average of 822 families per month with emergency groceries, and food drives like this help ensure there are enough groceries to aid Irving's needy families. ♥

**116** of 516 employment services clients were able to gain employment.

**11%** of the 14,829 households served (1,596 households) completed their intake form in Spanish, indicating they are less than proficient in English. These clients were assisted by a Spanish-speaking staff or volunteer case manager.

**94%** of employment services clients who gained employment remained employed for at least 90 days.

## EXXONMOBIL COMMUNITY SUMMER JOBS INTERN

### Leslie Lopez



We're proud to have Leslie Lopez as our ExxonMobil Community Summer Jobs Program (CSJP) intern in Employment Services. Leslie will identify job leads, coach clients and implement a Job

Search Seminar. The internship is made possible by a grant from ExxonMobil Foundation. Irving Cares is one of 60 local nonprofit organizations selected to participate this summer.

"We're pleased to be selected for this fine program. We've worked with some great interns through CSJP, and several have decided to go into nonprofit work after their experiences here. Interns have direct client contact and learn about the workings of a nonprofit. It's a fantastic opportunity for both the intern and the agency," said Teddie Story, Irving Cares CEO. ♥



Leslie Lopez

## FROM A FORMER CLIENT

### A note and a gift

2-14-14  
To Whom it may concern,  
I am writing to let you know the \$5.00 dollars in cash is a donation. It's not much but please use it to help buy food for those in need. I'll never forget as the Lord helps me, the time Irving Cares blessed me with food when I needed food to eat. May God continue to bless you all in Jesus name. And thanks again for all you do to help those in need.



## Anthony is Back on His Feet Again

We first met Anthony when he came to Irving Cares for food, having been out of work for three years and soon to be evicted from his apartment. His dual degrees, Bachelors in Business and Masters in Chemistry, had served him well. He had been a sales rep for a pharmaceutical company and owned his own company. The case manager referred him to Employment Services' Job Search Seminar.

There he updated his résumé and was given a packet of job leads. Soon Anthony found a loan agent position at \$25 an hour. He recently let his case manager know he found yet another job with a major financial institution making \$52 an hour, grateful to be back on his feet again. ♥

### STAFF SPOTLIGHT

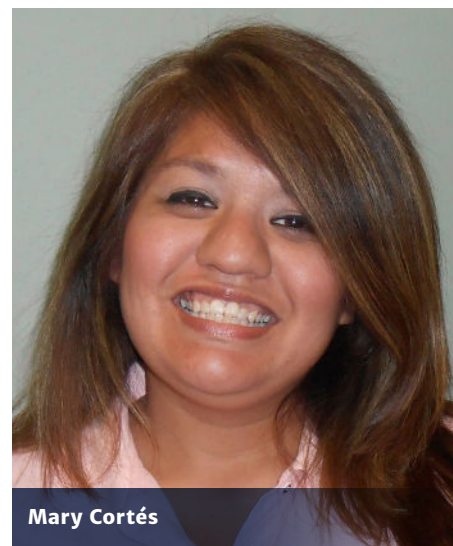
## Mary Cortés

I started working part time at Irving Cares my senior year in high school as an administrative assistant. I became a Bilingual Case Manager when the position was created in 2004, then Senior Case Manager in 2011 when the former Senior Case Manager retired.

I was born in Dallas and grew up in Irving. I am currently attending Eastfield College to earn my Social Work degree.

My favorite part of working at Irving Cares is being able to help Spanish speakers in their native language. English is my second language, so I understand the challenges that come along with not being able to speak English in Texas. ***When someone is in need, they want someone who understands them, someone who can guide them and point them in the right direction.***

We don't want a language barrier when clients come to Irving Cares regardless of the language they speak at home. I'm proud that we have volunteers that can also provide services in other languages (Portuguese, French, and Korean). ♥



Mary Cortés

## Please participate in these generous programs — a “painless” way to support Irving Cares:

### Kroger Community Rewards®

#### Enrollment Starts August 1

Re-Enroll your Kroger Plus Card beginning August 1 to help Irving Cares continue its work.

Supporting Irving Cares has never been easier — just shop at Kroger and swipe your Plus Card! Here's how...

1. Visit [KrogerCommunityRewards.com](http://KrogerCommunityRewards.com)
2. Locate the State of Texas and click “Enroll Now”
3. Sign in to your online account, or create an account
4. Find and select Irving Cares and click “Save”

Kroger is committed to helping our communities grow and prosper. Today, Kroger contributes more than \$220 million annually in funds, food and products to support local communities.



### Tom Thumb Community Bucks

#### September 1 – 30, 2014

For every \$50 in groceries you buy, you'll receive a Community Buck.

Spend a minimum of \$50 at your local Tom Thumb between September 1–30, and you'll receive a Community Buck. Collect as many as you can and send them to Irving Cares or bring them by. Irving Cares will receive \$1 for every Community Buck in the form of a Tom Thumb Gift Card.

Irving Cares can use its Gift Card for turkeys, hams, food baskets, holiday grocery needs, and more!

*Note: There's a limit of three Community Bucks per transaction.*



Mail bucks to:

Karlene Swaynie  
Irving Cares  
440 S. Nursery Road Ste 101  
Irving, TX 75060

On Thursday, September 18, 2014  
from 6:00 a.m. to Midnight  
**Irving Cares**  
*is participating in*  
**North Texas Giving Day**

Only on September 18, every donation \$25 and above will be eligible for bonus funds if you donate to Irving Cares through the **www.NorthTexasGivingDay.org** web site.

The more that's given, the greater the bonus — and the greater the impact you'll have on struggling Irving families needing a hand up to get through a rough spot in life.

Please contact Kimberly Humphries at 972-721-9181 x202 with any questions.

**Save the date — and Get Up & Give on 9/18/14**



**The help of extraordinary volunteers  
makes Irving Cares possible. Last  
year, volunteers logged 18,723 hours!**

Our needs: helpers in the food pantry or warehouse on Thursdays 1–4 pm, drivers for food donation and retail food pick ups, and volunteers for case management and intake. On the job training provided. Contact Kyle Taylor at [ktaylor@irvingcares.org](mailto:ktaylor@irvingcares.org) or 972-721-9181 x209.



RETURN SERVICE REQUESTED

[www.irvingcares.org](http://www.irvingcares.org)

FAX (972) 438-7345

TEL (972) 721-9181

Irving, TX 75060

P.O. Box 177425

440 South Nursery Road, Suite 101

Irving Cares, Inc.



NON-PROFIT  
US  
POSTAGE  
PAID  
PERMIT #4043  
DALLAS, TX